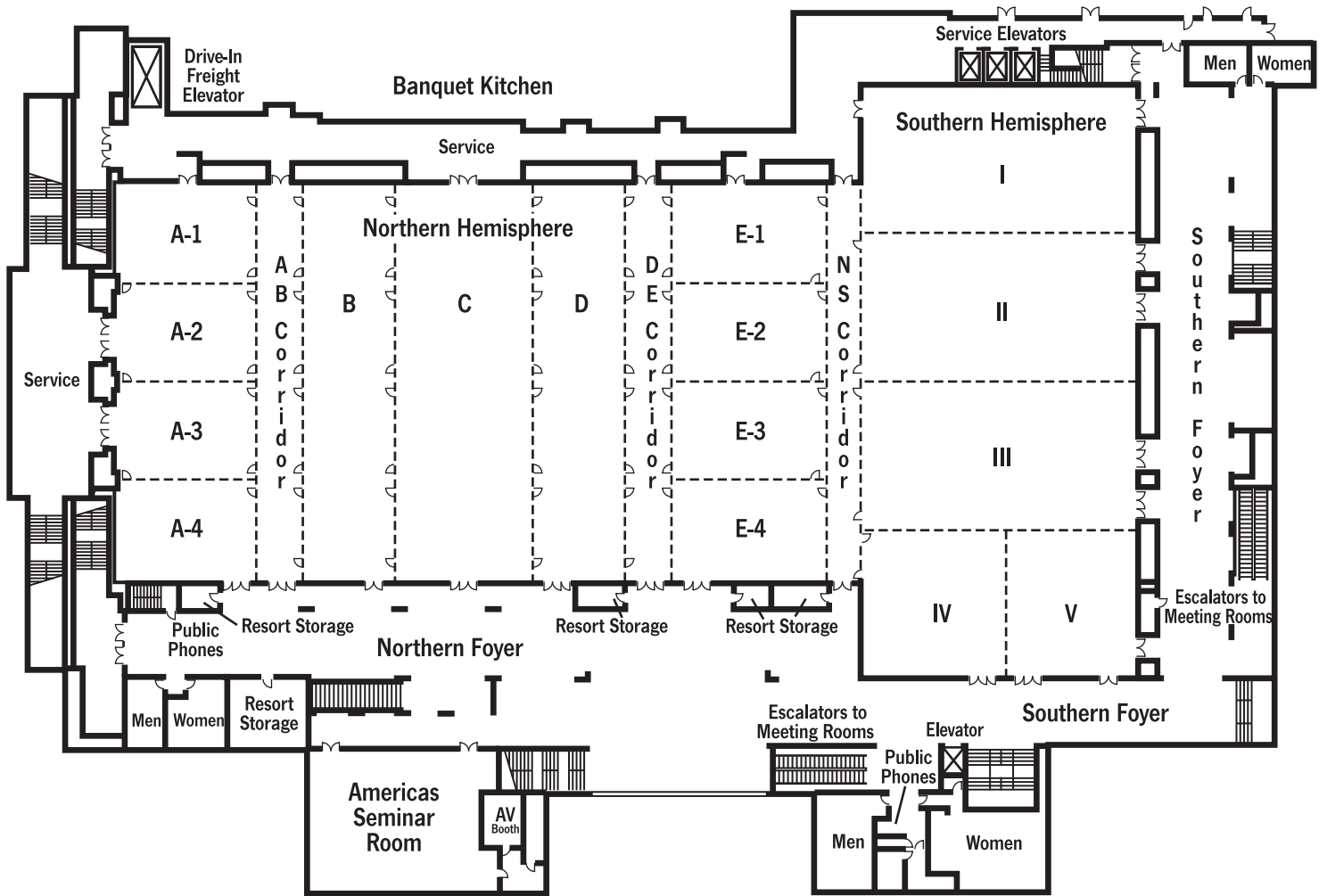


Walt Disney World Dolphin Ballroom Level



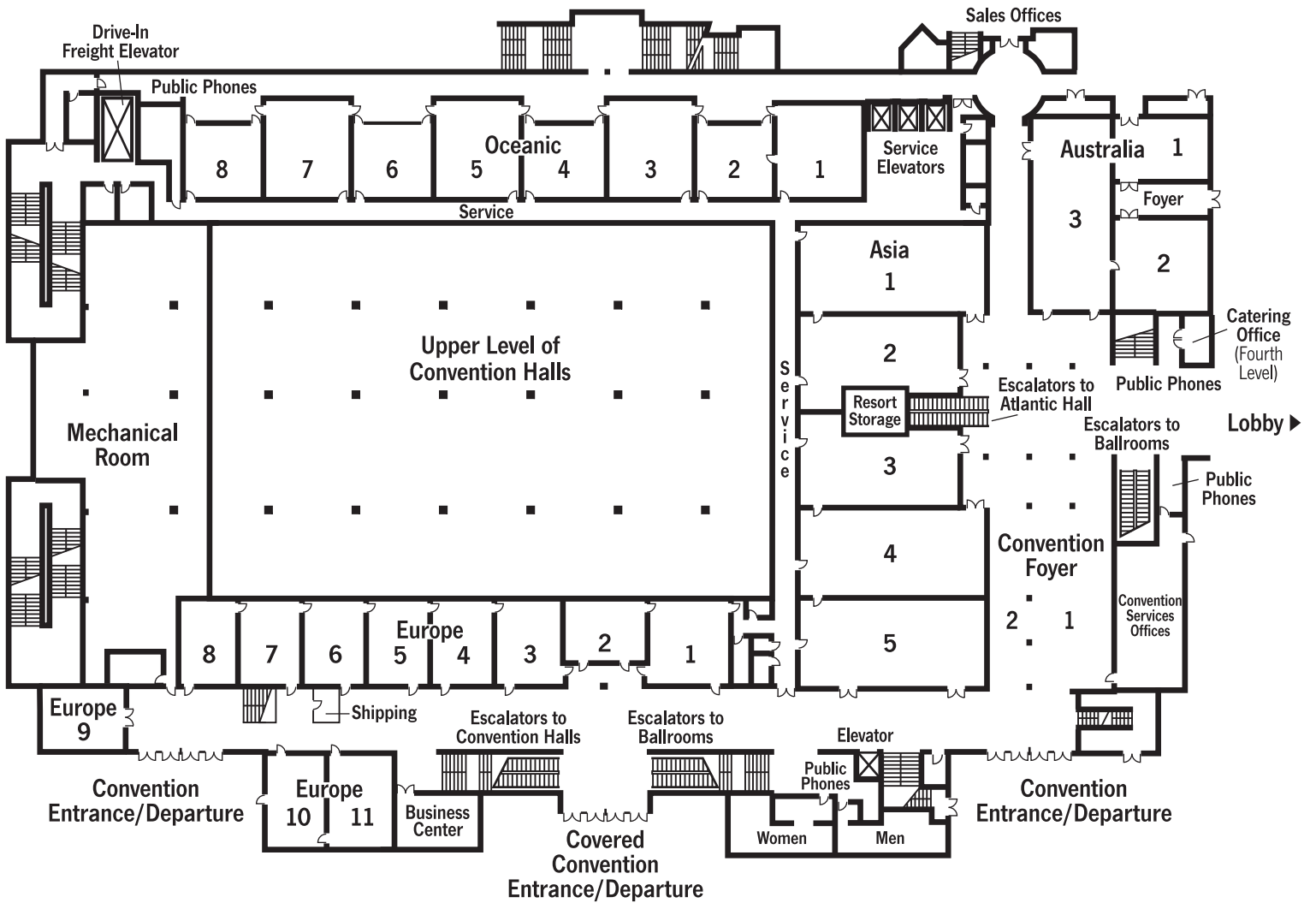
BALLROOM LEVEL

MEETING ROOM	SQ.FT.	LENGTH	WIDTH	CEILING HT.	THEATER	SCHOOL	BANQUET	RECEPTION
--------------	--------	--------	-------	-------------	---------	--------	---------	-----------

Hemispheres Ballroom	54,238	351'10"	199'10"	27'4"	6,831	4,047	3,380	9,470
NORTHERN HEMISPHERE	33,556	244'11"	137'8"	27'4"	4,761	2,736	2,552	5,840
Salon A	6,672	137'9"	48'2"	22'2"	680	432	440	1,080
Salon A1	1,672	48'2"	34'8"	22'2"	208	112	120	285
Salon A2	1,664	48'1"	33'8"	22'2"	208	112	120	285
Salon A3	1,664	48'3"	33'7"	22'2"	208	112	120	285
Salon A4	1,672	48'3"	34'8"	22'2"	208	112	120	285
Salon B	4,343	137'9"	31'9"	27'4"				
Salon B, A/B Cor	6,534	137'9"	47'8"	27'4"	814	396	460	1,130
Salon C	6,493	137'6"	47'8"	27'4"	814	396	460	1,130
Salon D	4,343	137'8"	31'8"	27'4"				
Salon D, D/E Cor	6,557	137'11"	47'9"	27'4"	814	396	460	1,130
Salon B, C	10,836	137'6"	79'7"	27'4"	1,482	800	660	1,650
Salon C, D	10,836	137'8"	79'6"	27'4"	1,482	800	660	1,650
Salon B, C, D	15,179	137'8"	111'7"	27'4"	2,030	1,000	960	2,520
Salon E	7,296	137'7"	53'3"	22'2"	844	430	480	1,280
Salon E1	1,841	53'3"	34'8"	22'2"	210	126	120	285
Salon E2	1,807	53'3"	33'8"	22'2"	210	126	120	285
Salon E3	1,807	53'3"	33'6"	22'2"	210	126	120	285
Salon E4	1,817	53'3"	34'7"	22'2"	210	126	120	285
Salon E+ Svc Cor	9,097	137'7"	66'4"	22'2"	1,110	600	550	1,350
Pre-Function: A/B Foyer	4,220				N/A	N/A	N/A	575
Pre-Function: C/D/E Foyer	11,175				N/A	N/A	N/A	1,600
Ballroom Foyer	15,395				N/A	N/A	N/A	2,175
SOUTHERN HEMISPHERE	18,881	199'0"	92'5"	22'2"	2,410	1,152	1,190	3,000
Salon I	4,719	92'5"	49'3"	22'2"	480	288	310	775
Salon II	4,793	92' 5"	51'1"	22'2"	528	306	310	775
Salon III	4,767	92' 5"	50'8"	22'2"	528	306	310	775
Salon IV	2,315	48'11"	45'8"	22'2"	220	135	150	375
Salon V	2,287	48'11"	45'5"	22'2"	220	135	150	375
Salon IV/V	4,602	92' 5"	48'11"	22'2"	480	288	310	775
Pre-Function: I/II Foyer	4,896				N/A	N/A	N/A	615
Pre-Function: III/IV Foyer	4,920				N/A	N/A	N/A	580
Pre-Function: IV/V Foyer	3,096				N/A	N/A	N/A	505
Ballroom Foyer	12,912				N/A	N/A	N/A	1,700
Americas Seminar Room	2,822	63'9"	45'5"	11'8"	300	186	190	475

Square footage is based on actual room dimensions, while setup capacities are based on usable space only.

Walt Disney World Dolphin Lobby Level

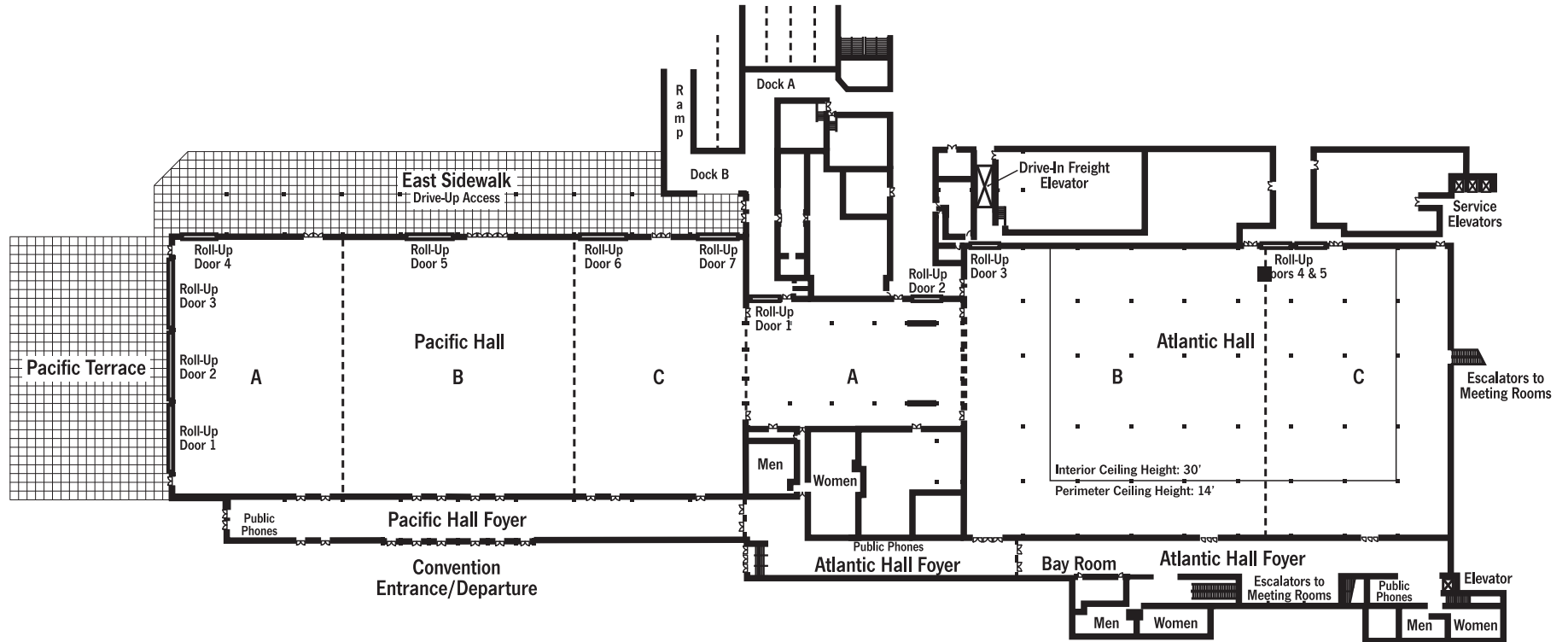


LOBBY LEVEL

MEETING ROOM	SQ.FT.	LENGTH	WIDTH	CEILING HT	THEATER	SCHOOL	BANQUET	CONF	U-SHAPE	RECEPTION	HOLLOW SQUARE
OCEANIC											
Oceanic 1	1,122	37'0"	29'5"	11'9"	119	68	80	46	35	210	42
Oceanic 2	772	29'0"	27'1"	11'8"	78	40	50	34	29	140	32
Oceanic 3	1,130	36'10"	26'11"	11'9"	112	68	80	46	35	195	42
Oceanic 4	849	29'0"	29'9"	11'9"	84	48	50	36	29	155	38
Oceanic 5	1,105	35'10"	29'5"	11'9"	112	68	80	40	35	190	42
Oceanic 6	845	28'11"	29'7"	11'10"	84	48	50	36	29	155	38
Oceanic 7	1,115	36'11"	29'3"	11'9"	111	68	80	46	35	195	42
Oceanic 8	848	28'11"	29'9"	11'9"	84	48	50	36	29	155	38
ASIA											
Asia 1	2,241	70'9"	32'1"	11'5"	286	156	180	76	68	375	66
Asia 2	1,772	59'10"	27'4"	11'8"	213	116	110	64	56	275	58
Asia 3	1,769	59'10"	27'2"	11'9"	213	110	110	64	56	275	58
Asia 4	2,259	70'6"	32'5"	11'5"	286	156	180	76	68	375	66
Asia 5	2,282	70'7"	31'2"	11'5"	268	144	160	76	68	380	66
EUROPE											
Europe 1	869	30'4"	29'1"	11'8"	91	54	50	34	29	160	38
Europe 2	806	26'2"	31'7"	11'5"	83	42	40	34	26	130	36
Europe 3	740	30'4"	24'11"	11'8"	78	40	40	28	26	130	36
Europe 4	703	31'7"	22'10"	11'7"	81	45	40	34	26	130	36
Europe 5	736	32'8"	23'1"	11'8"	83	45	40	34	26	130	36
Europe 6	700	29'11"	23'0"	11'9"	72	42	40	28	26	120	36
Europe 7	690	31'1"	22'8"	11'9"	72	42	40	28	26	120	36
Europe 8	706	32'9"	21'7"	11'10"	75	40	40	34	26	125	36
Europe 9	644	30'10"	21'3"	11'9"	70	40	40	34	26	115	32
Europe 10	732	33'5"	22'1"	11'8"	80	40	40	34	26	130	36
Europe 11	751	32'6"	23'3"	11'8"	75	45	40	34	26	135	36
AUSTRALIA											
Australia 1**	696	33'9"	21'3"	11'5"	N/A	N/A	N/A	N/A	N/A	N/A	N/A
Australia 2	1,131	35'11"	32'6"	9'2"	115	63	60	40	32	N/A	N/A
Australia 3	2,184	75'8"	29'1"	12'2"	287	174	140	82	74	380	80

Square footage is based on actual room dimensions while setup capacities are based on usable space only.
 ** Boardroom features permanent board table.

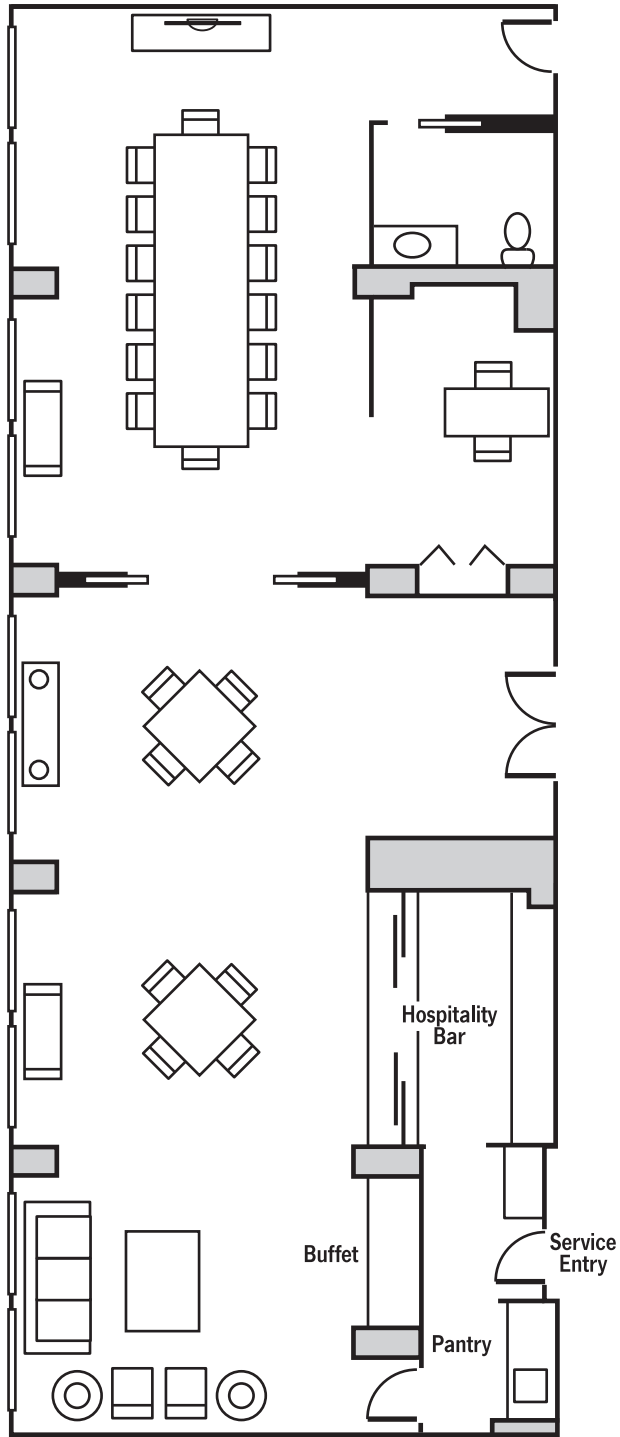
Walt Disney World Dolphin Convention Hall



CONVENTION HALL OPTIONS

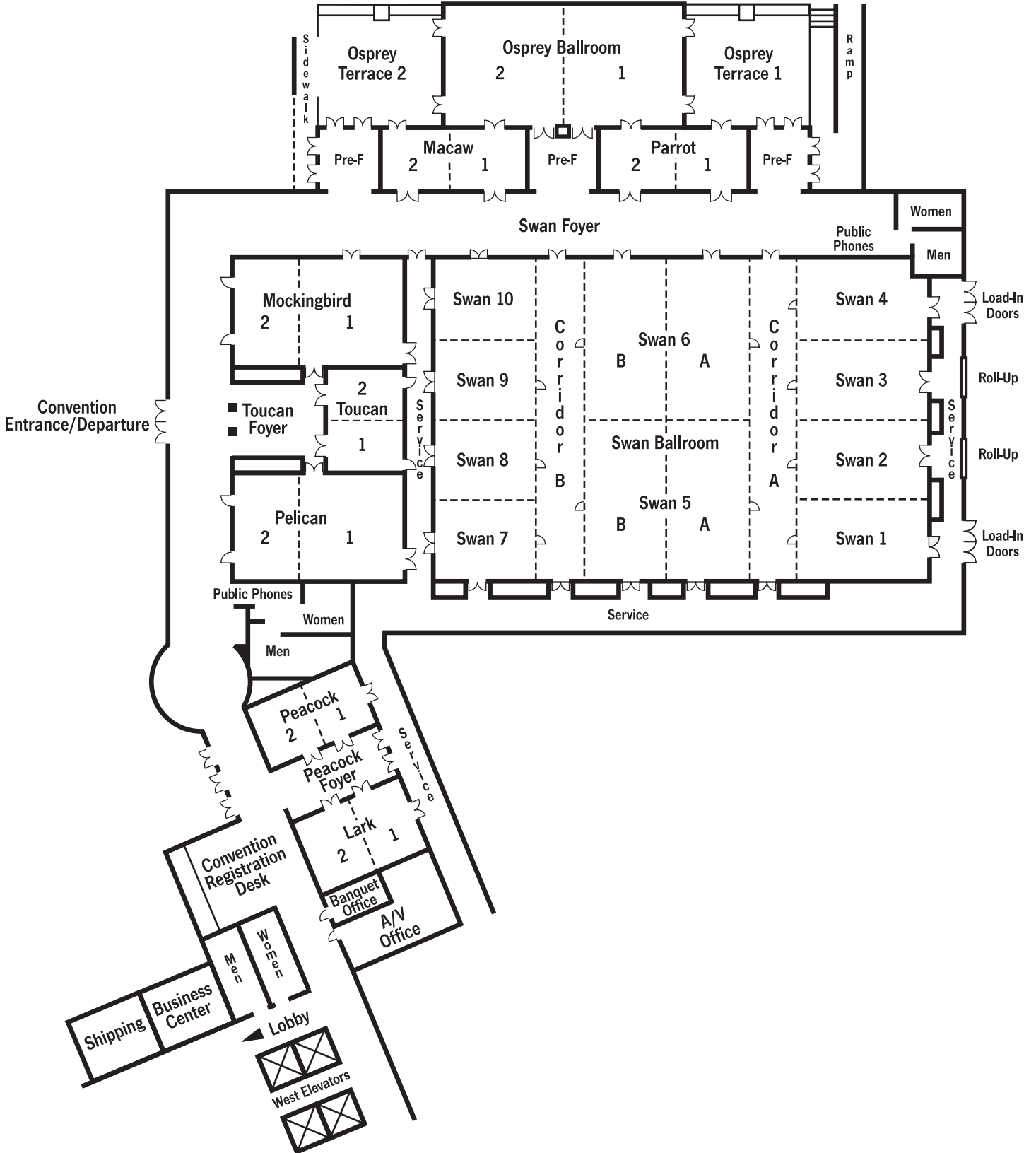
MEETING ROOM	SQ.FT.	LENGTH	WIDTH	CEIL. HT.	LOW PT.	8' X 10'	10' X 10'	THEATER	SCHOOL	BANQUET	RECEPTION
Atlantic/Pacific Halls	110,500	-	-	-	-	673	556	-	-	6,450	15,000
Atlantic Hall	60,575	-	-	-	-	341	301	-	-	3,450	8,770
Atlantic A	9,300	124'	75'	12'8"	12'8"	28	28	660	378	530	1,570
Atlantic B	31,850	182'	175'	30'	14'	178	150	-	-	1,920	4,400
Atlantic C	19,425	175'	111'	30'	14'	111	95	-	-	1,000	2,800
Atlantic B/C	51,275	293'	175'	30'	14'	313	263	-	-	2,920	7,200
Pacific Hall	49,920	320'	156'	25'8"	23'8"	332	255	6,100	3,450	3,000	7,500
Pacific A	14,976	156'	96'	25'8"	23'8"	98	78	1,900	1,000	840	2,000
Pacific B	19,968	156'	128'	25'8"	23'8"	122	117	2,300	1,250	1,200	3,500
Pacific C	14,976	156'	96'	25'8"	23'8"	85	78	1,900	1,000	840	2,000
Pacific Terrace	16,200	-	-	-	-	-	-	-	-	1,300	1,620

Walt Disney World Dolphin Premier Suite



ROOM	SQ.FT.	LENGTH	WIDTH	CEIL. HT.	LOW PT.	CONF	RECEPTION
Premier	1,102	66'	16.7'	8'	6'11"	10	50

Walt Disney World Swan Lobby Level



SWAN BALLROOM OPTIONS

MEETING ROOM	SQ.FT.	LENGTH	WIDTH	CEIL. HT.	THEATER	SCHOOL	H/S	U-SHAPE	BQT.	REC.
Swan Ballroom	22,582	188'4"	121'	22'	2,700	1,500	-	-	1,500	2,785
Swan 1- 6A	11,468	121'	95'10"	22'	1,550	690	-	-	800	1,400
Swan 5B - 10	11,114	121'	92'2"	22'	1,400	690	-	-	800	1,350
Swan 1	1,426	47'10"	30'2"	22'	160	90	52	41	90	150
Swan 2	1,419	47'10"	30'	22'	160	90	52	41	90	150
Swan 3	1,416	47'10"	29'9"	22'	160	90	52	41	90	150
Swan 4	1,426	47'10"	30'2"	22'	160	90	52	41	90	150
Swan 5	3,907	64'11"	60'5"	22'	450	300	-	95	250	550
Swan 6	3,895	64'11"	60'3"	22'	450	300	-	95	250	550
Swan 7	1,337	44'2"	30'2"	22'	144	84	48	42	80	120
Swan 8	1,329	44'2"	30'	22'	144	84	48	42	80	120
Swan 9	1,325	44'2"	29'9"	22'	144	84	48	42	80	120
Swan 10	1,333	44'2"	30'1"	22'	144	84	48	42	80	120
Corridor A	1,815	121'	15'	22'	-	-	-	-	-	-
Corridor B	1,815	121'	15'	22'	-	-	-	-	-	-
Swan 1-4 + Cor. A	7,502	121'	62'	22'	900	480	-	-	500	700
Swan 5 + 6	7,802	121'	64'11"	22'	900	480	-	-	500	700
Swan 7-10 + Cor. B	7,139	121'	59'	22'	850	480	-	-	400	700
Osprey Ballroom	3,525	75'	47'	16'	432	234	98	81	240	450
Osprey 1	1,762	47'	37'	16'	198	120	62	53	120	300
Osprey 2	1,762	47'	37'	16'	198	120	62	53	120	300

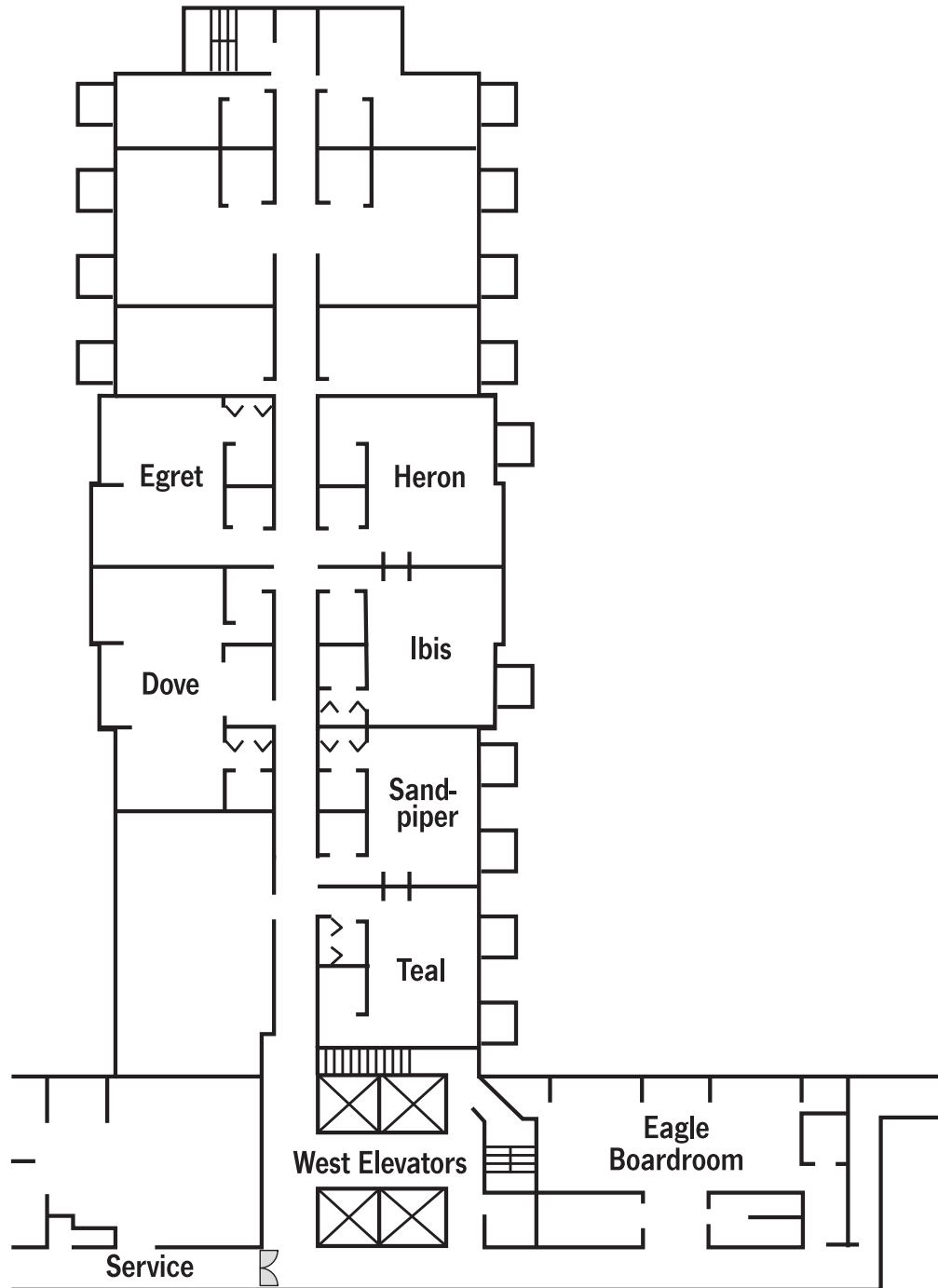
*Ballroom ceilings are 22' - 23'6" feet high. Loading dock doors are 14 feet high and 10 feet wide. Ballroom Corridors are 14 feet wide. Numbers shown assume maximum capacities. Banquet setup assumes rounds of 10. For reception and rear screen capacities, see workbook.

SWAN MEETING ROOM OPTIONS

GROUND LEVEL	SQ.FT.	LENGTH	WIDTH	THEATRE	SCHOOL	H/S	U SHAPED	BANQUET	RECEPT.
Pelican	2,633	63'1"	40'9"	310	169	76	62	150	300
Pelican 1	1,765	42'0"	40'9"	190	117	58	44	90	180
Pelican 2	868	40'9"	20'9"	85	48	40	36	50	95
Toucan	1,060	39'7"	30'7"	91	54	40	32	60	100
Toucan 1	530	30'7"	19'8"	46	24	28	23	30	50
Toucan 2	530	30'7"	19'8"	46	24	28	23	30	50
Mockingbird	2,516	63'3"	39'11"	298	156	74	65	150	300
Mockingbird 1	1,658	42'1"	39'11"	170	90	58	44	90	180
Mockingbird 2	858	39'11"	20'9"	76	42	40	35	50	95
Parrot	1,248	54'	23'1"	107	69	52	47	60	100
Parrot 1	607	26'4"	23'1"	44	33	22	18	30	50
Parrot 2	641	27'8"	23'1"	44	33	22	18	30	50
Macaw	1,248	54'	23'1"	107	69	52	47	60	100
Macaw 1	641	27'8"	23'1"	44	33	22	18	30	50
Macaw 2	607	26'4"	23'1"	44	33	22	18	30	50
Lark	1,085	43'6"	25'1"	103	54	44	38	60	100
Lark 1	542	25'1"	21'6"	48	33	22	18	30	50
Lark 2	543	25'1"	21'7"	48	33	22	18	30	50
Peacock	1,057	43'5"	21'6"	103	54	44	38	60	100
Peacock 1	529	24'6"	21'6"	48	33	22	18	30	50
Peacock 2	528	24'5"	21'6"	48	33	22	18	30	50

Meeting room ceilings are 12'1" - 15'3" feet high.

Walt Disney World Swan Hospitality Suites

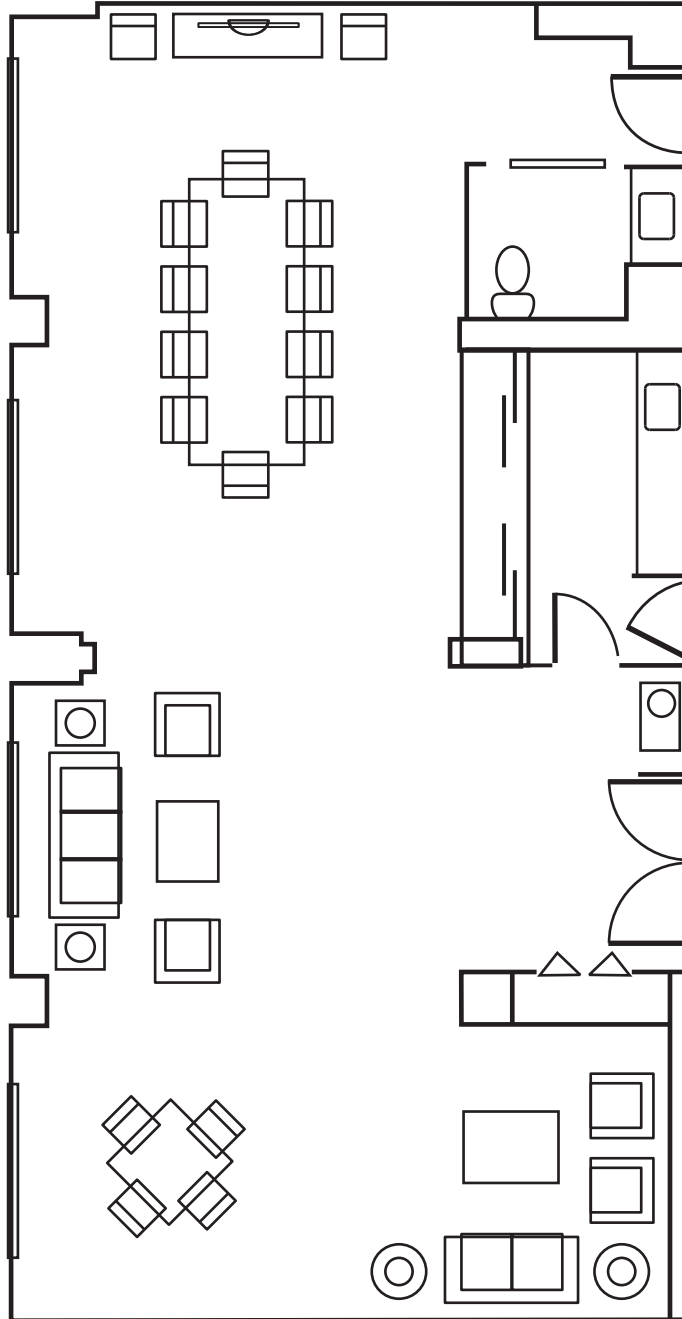


HOSPITALITY SUITES/BOARDROOM

SECOND LEVEL	SQ.FT.	LENGTH	WIDTH	THEATRE	SCHOOL	CONF	U SHAPED	BANQUET	REC
Dove	707	38'4"	18'7"	56	30	34	28	30	50
Egret	465	24'3"	18'8"	40	24	22	28	20	35
Heron	455	24'1"	19'1"	45	24	22	18	20	35
Ibis	473	24'0"	19'1"	45	24	22	18	20	35
Sandpiper	443	24'5"	18'1"	45	24	22	18	20	35
Teal	403	21'5"	18'1"	36	18	16	11	20	35
Eagle (Boardroom)	663	41'7"	16'4"	N/A	N/A	20	N/A	N/A	N/A

Hospitality and boardroom ceilings are 8'8" - 9' feet high.

Walt Disney World Swan Ambassador Suite



ROOM	SQ.FT.	LENGTH	WIDTH	CEIL. HT.	LOW PT.	8' X 10'	10' X 10'	THEATER	SCHOOL	CONF	RECEPTION
Ambassador Suite	901	53'	17'	8'10"	7'10"	673	556	-	-	10	50